



Heise-Meyer, LLC  
COMMERCIAL REAL ESTATE

# FOR SALE

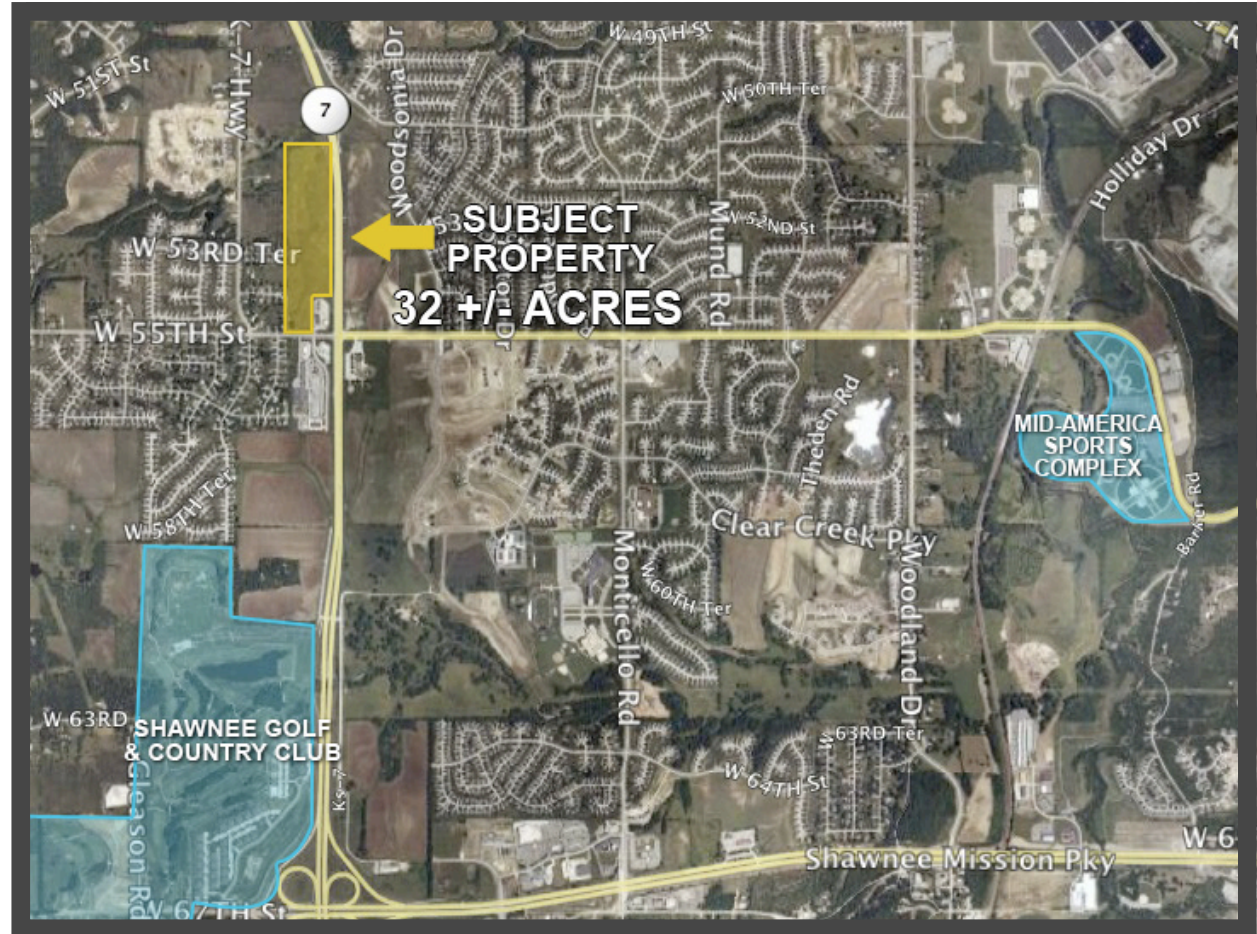
N.W. Corner of 55th St. and K-7

32 +/- Acres

Zoned "Multi-Family"

Traffic Count: 62,000 cars / day  
('05 K.D.O.T. / K-7 & 55th St.)

Prairie Pines - Shawnee, KS.



VISIT US ONLINE  
**HEISE-MEYER.COM**

For more information contact:

**John Stafford**

p. 816.251.4782  
c. 913.461.5229  
e. johns@heise-meyer.com

**Heise-Meyer Properties**  
200 NE Missouri Rd., Suite 100  
Lee's Summit, MO 64086  
p. 816.246.4600  
f. 816.256.4650